

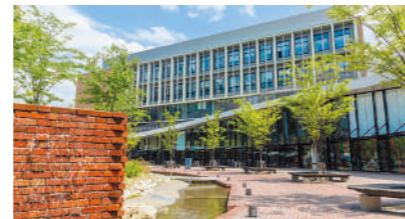
# MEIJO UNIVERSITY CAMPUS INFORMATION



- Faculty of Law
- Faculty of Business Management
- Faculty of Economics
- Faculty of Science and Technology
- Faculty of Agriculture
- Faculty of Information Engineering

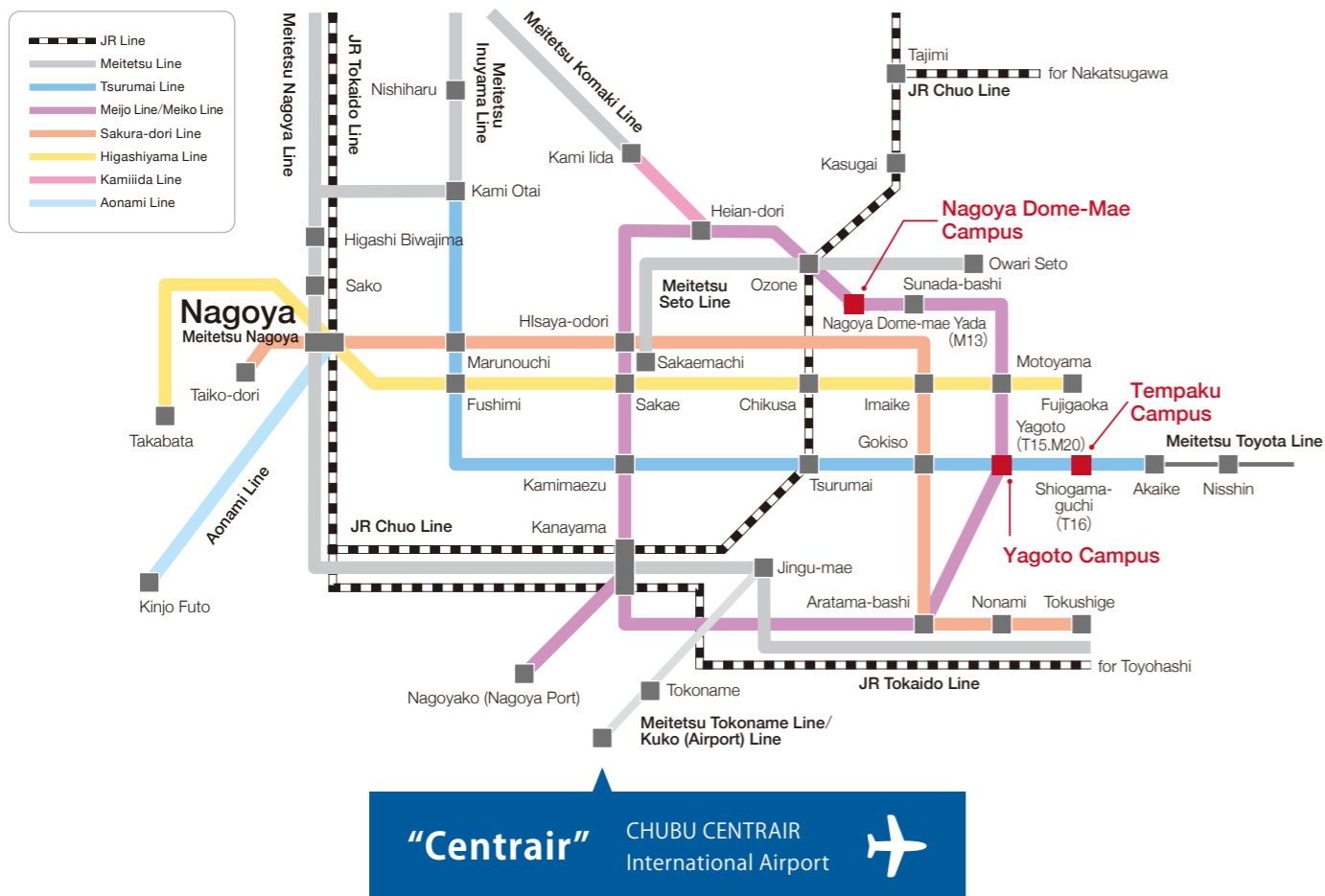


- Faculty of Pharmacy



- Faculty of Urban Science
- Faculty of Human Studies
- Faculty of Foreign Studies

## ACCESS



# MEIJO UNIVERSITY

studying abroad

Welcome to Meijo University in Nagoya, the center of Japan.

## FOR THOSE INTERESTED IN STUDYING ABROAD

Meijo is **no.1** in Central Japan

Nagoya is a safe city.

Is the cost of living affordable in Nagoya?



名城大学  
MEIJO UNIVERSITY

1-501 Shiogamaguchi, Tempaku-ku, Nagoya, Aichi, Japan 468-8502  
Tel: +81-52-838-2043 Email: oejimu2@ccmails.meijo-u.ac.jp



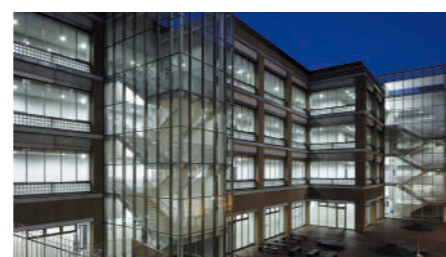
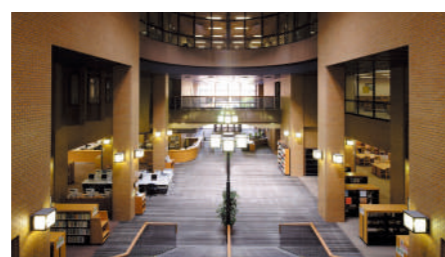
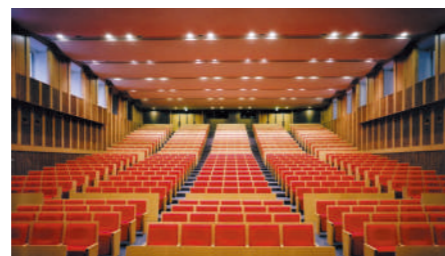
www.meijo-u.ac.jp



Customized support for safe campus life.  
 A university where you can enjoy interacting  
 with a diverse student population.  
 A comfortable city to live in.

# CONTENTS

Table of Contents	01
Why Meijo University?	03
Attractions in Nagoya / Dormitory Area Map	04
Campus Life and Student's Daily Activities / Explore Japan / Annual Schedule	05
My Daily Life	07
About Dormitory	08
Study Abroad Program / Facts at a Glance / Office of International Affairs	09





# WHY MEIJO UNIVERSITY?

## POINT 1. Campus Life

Meijo University—one of the largest universities in the Chubu region—offers integrated arts and sciences education. We have many students, club activities and undergraduate programs, adding sparkle to your campus life.



## POINT 2. Dormitory

The remarkably tidy facility is conveniently located just a 3-minute walk from Tempaku Campus. Wi-Fi is also available. Rooms are equipped with automatic locking doors for your safety. By using the scholarship money granted to exchange students for the rent, exchange students can stay at the university dormitory virtually free of charge.



## POINT 3. Student Assistants (Buddy System)

Student assistants are volunteer students and understand international students well. They will help you in everything from your everyday life to academic affairs so that you will not feel distressed when you first live alone in Japan. The friendships you build here will be lifelong treasures.



### Airport Pickup Service for Exchange Students

Student assistants pick up exchange students at the airport arrival lobby and take them to the dormitory near the campus.



### Communication Lounge

This space is mainly for Japanese language learning support sessions and interaction events; it is also open to all students for relaxing, holding meetings, and more.

### Speaking Partners



A regular weekly session is held where international students pair up with student assistants as speaking partners. In these sessions, international students receive Japanese language support based on their needs; they can have their Japanese essays corrected or receive assistance in preparing for their classes.

## POINT 5. Convenient Location

Our campuses and the dormitory are conveniently located near transportation stations. Nagoya features well-developed public transportation systems, including subways and buses, allowing you to reach the heart of the city in just 30 minutes from any of our campuses.



## POINT 4. Friendly Faculty and Staff Members



You will receive generous support from our friendly faculty and staff members for a comfortable campus life in Japan, such as assistance in signing up for courses and opening a bank account! We will provide full support for your everyday life.

Check out our strong points!

## ATTRACTIONS IN NAGOYA

Nagoya has many popular restaurants, tourist spots and cultural sites, such as Nagoya Castle, which features golden *shachihoko* ornaments; TOYOTA, an internationally renowned company; and Nagoya cuisine like *miso-katsu* (pork cutlet with sweet miso sauce).

## SAFE ENVIRONMENT!

Nagoya has many residential areas and shopping malls in a tranquil atmosphere; the city is comfortable and safe to live in.

## AFFORDABLE!

Prices in Nagoya are lower than in Tokyo and Osaka, meaning it is an affordable city in which to live.

## CENTER OF JAPAN!

Nagoya, located in the center of Japan, offers convenient access to anywhere. In addition to direct access to the Chubu International Airport and the Shinkansen (bullet train) station, the maglev train system will start commercial operation in 2027, making the city more convenient than ever before.

### CULTURE

The outskirts of Nagoya are characterized by their unique cultures that cannot be found in other areas, offering various attractions.

The dreamy mood illuminated at night is an Instagram-worthy spot.



Popular *miso-nikomi udon* (miso stewed udon). Nagoya is full of popular foods.



High-profile leisure spots are easily accessible from Nagoya. Why not take a dip in the hot springs and refresh yourself at Yuami no Shima Hot Spring after enjoying Nagashima Spa Land and the illumination show at Nabana no Sato?

## DORMITORY AREA MAP

Restaurants Popular with Students

There are supermarkets and clinics around the dormitory, allowing you to live with peace of mind.

**Anjuli**  
Authentic Indian curries are available. Chicken curry is the most popular.

**Kinko**  
The fried chicken meal is quite popular with students! Put as much mayonnaise as you like—it is excellent with fried chicken!

**Hideyoshiya (Ramen)**  
The rich-tasting soup goes exceedingly well with noodles. We recommend topping it with an egg.

**Ramen Mugen**  
The soup-less dan dan mian noodle is particularly popular.

**Nou-Brand**  
Offering a wide array of tube cakes and Swiss rolls.

Map labels include: Police Box, Bank, Convenience Store, Drugstore, Shopping Mall, Yagoto Station, Meijo University Yagoto Campus, Meijo University Tempaku Campus, Dormitory, Post Office, Dental Clinic, Skiogawa-guchi Station, Subway Meijo Line, Subway Tsurumai Line, and Supermarket.



# CAMPUS LIFE

## AND STUDENTS' DAILY ACTIVITIES

Each and every class at Meijo University empowers you.



Each lecture is 90 minutes long. You can take plenty of time to study your interests and find pleasure in learning.

Use your spare time effectively in our well-equipped campus facilities.



There may be days when your first class starts in the afternoon. In such cases, you can exercise at the fitness gym or study Japanese or enjoy reading in the on-campus book cafe.

Enjoy your lunch time at the school cafeteria featuring a diverse selection of menu items!!



You can choose from a variety of menu items including daily specials and limited-time meals, and everything tastes great! Menu items are available at a student-friendly price of less than 500 yen. Restaurants that open early in the morning serve breakfast specials, which is very helpful for dormitory students.

Spend your free time working part-time or going out with your friends.



You can work part-time or hang around the city of Nagoya with your friends, or there may be days when you have to go straight home and write a paper. Be sure to balance work and play to enjoy your campus life!

### Photo



# EXPLORE



Studying abroad is a great opportunity for you to learn in-depth information about Japanese culture. You will be invited to a formal tea ceremony and many other culture experiences where you can become familiar with Japanese traditions and customs.



Enjoy a city tour that will introduce you to Nagoya's charm. Japanese students will show you around Nagoya Castle and other iconic sites representing Nagoya.



We have various Japanese student-organized field work arranged for international students to visit various places other than Nagoya.



In the cultural experience programs and the field work, you can experience rice-cake making, prayer offering manners at shrines and temples, and other activities unique to Japanese culture.

### About the International Japanese Studies (IJS) Program

The IJS is a program designed to allow international students to learn in-depth about Japan. This program is composed of lectures on various fields including traditional culture, pop culture, history and society. Focusing on hands-on experience, we invite international students to various free events and activities, such as touring an art museum, attending a performance by the Takarazuka Revue, visiting castles, shrines, temples and other historic sites, and experiencing Japanese culture.



Program Supervisor  
**SUZUMURA** Yusuke  
Associate Professor,  
Faculty of Foreign Studies



## Annual Schedule

Meijo University

3

Only for exchange students who start their course of study in spring semester

[Late March]

- Pick up at the airport on the arrival date
- Orientation
- Procedures and paperwork at city office, bank, etc.

4

[Early April]

- Classes start
- Course registration
- Health checkup (optional)
- Welcome party with student assistants

5

[May]

- Interaction event with affiliated high school students

6

7

[Early July]

- Field trip

7

[Late July]

- Regular examinations
- Farewell party with student assistants

[Late June to Early July] Meijo Japan Study Tour (summer)

8

9

> Summer vacation (August to Mid-September)

Only for exchange students who start their course of study in the fall semester

[Early September]

- Pick up at the airport on the arrival date
- Orientation
- Procedures and paperwork at city office, bank, etc.

10

11

[Mid-September]

- Classes start
- Course registration
- Welcome party with student assistants
- Health checkup (optional)

11

[November]

- University festival
- Japanese culture experience program

12

[December]

- Field trip

1

[January]

- Regular examinations
- Farewell party with student assistants
- Meijo Japan Study Tour (winter)

2

> Spring vacation (February to March)

### Spring

- Cherry-blossom viewing
- Spring festival
- Clamming

**Point** ▶ The neighboring area of Nagoya, in which the University is located, features not only historically famous castles and shrines, but also rivers, mountains and other natural environments where cherry blossom trees bloom beautifully. There are many cherry blossom viewing spots, so you will be able to enjoy a cherry-blossom viewing near the University.

### Summer

- Fireworks display
- Summer festival
- Camping
- Sea bathing/Swimming pool
- Nagoya Grand Sumo Tournament

**Point** ▶ The fireworks displays are a must-see event in summer. Some of the largest fireworks displays of the summer festivals in Japan are held in Nagoya and its neighboring areas. Why not dress in yukata (a summer casual kimono) and go out to experience these traditional events? During summer vacation, you can enjoy nature by going sea bathing or camping.

### Autumn

- Autumn leaves
- Autumn festival
- Fruit picking

**Point** ▶ Autumn in Japan is the time to enjoy viewing autumn leaves. There are many spots around the University to enjoy the beautiful scenery. In Japan, autumn is known as "the season for eating," so enjoy viewing beautiful colored leaves while eating delicious dishes. Located in the center of Japan, Nagoya offers perfect accessibility to viewing autumn leaves and participating in festivals.

### Winter

- Winter festival
- Illumination events
- Snowboarding/Skiing/Skating
- New Year's visit to a shrine or a temple
- New Year's Eve Countdown

**Point** ▶ Gifu Prefecture, next to Aichi, has many ski resorts, while large skating rinks are set up in Nagoya and Mie Prefecture, so you can try out a variety of winter sports. Illumination events are also held in various locations where you can enjoy winter activities.



Fulfilling!

# MY DAILY LIFE



## Festival

### About the University Festival

The University Festival is independently organized by students to reflect what is important to them. Working together with one another to run the festival stalls can deepen the cross-border bonds with your friends. Part of the festival is shows performed by clubs and special events to which idols or celebrities are invited, providing you and your friends with party opportunities!

## Fitness

### About Fitness Gym

A gymnasium and a training room equipped with high-quality fitness facilities is available on campus. Sports events are also held where you can play various sports while interacting with Japanese students.

## Going Out for Fun

### About Places to Go

Osu and Sakae are popular destinations for students. You will find everything from cafes and restaurants offering creative meals and sweets to massively popular subculture events and activities, all available in areas you can quickly reach by train!



## Part-time Jobs

### About Part-time Jobs

You can work part-time as an English tutor for Japanese students at the on-campus Global Plaza! Even if you are not confident in your Japanese language skills, you will be able to comfortably engage in this on-campus part-time job. Or, working part-time off-campus lets you interact with Japanese people other than students, allowing you to gain an understanding of the Japanese meaning of work, as well as to develop your social skills.



\*There are certain regulations for part-time jobs.

## Communication

### About Interaction with Japanese Friends

City tours, field trips, recreational events and many other activities will be offered so that you can easily make friends in Japan. Many students gather at the Communication Lounge, where you can have lunch while enjoying conversation with other students.



## Travel

### About Travel

Shinkansen bullet trains and expressway buses depart from and arrive at Nagoya, offering convenient access to anywhere in Japan! It takes an hour and a half to get to Tokyo and about 30 minutes to Kyoto. So, it's easy to take a casual trip to other cities on weekends. We also recommend taking a more leisurely tour of Japan during spring or summer vacation!



## ABOUT DORMITORY



From Indonesia

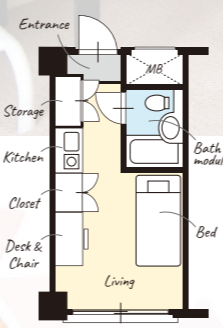
### SALMA ZULQAIDA

Ms. Zulqaida has settled into her student life in Japan and is now enjoying it. She says she was amazed at the beauty of parks in Japan, such as Tokugawa Garden.



## A clean studio apartment perfect for living alone!

\*The room layout on the left is for reference purposes only. Room layout varies slightly among rooms.



### Conveniently located near the station so that you'll never get lost.

Tempaku Campus is a few minutes' walk away from my dormitory, which is also close to the station and offers good access. There are also convenience stores and many other shops around the facility, allowing me to live a comfortable life.

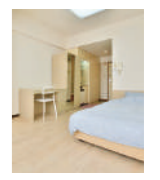
### Clean room with reliable security systems

The clean room is equipped with an air conditioner which keeps the room comfortable even in summer and winter. When I have questions or troubles, the dormitory manager helps me kindly. The automatic double-locking doors also give women like me peace of mind, as we can feel safe.



### Furnished with furniture and home appliances

Refrigerator, bed, air conditioner, and launderette are available. Dormitory staff quickly deal with a burned-out light bulb and other faulty electrical appliances, if any. The high speed Wi-Fi is also a plus.



Dormitory manager



**The dormitory is a safe living space where students can live with peace of mind in a safe environment. I carefully explain the cultural differences between Japan and their home countries to international students in support of their daily lives.**

"Better is a neighborhood aunt that is near than a mother far off." This is my belief as a dormitory manager who takes care of dormitory students. As a guardian of students, I always tell them to ask me whenever they have a problem. I used to work as a health professional, so I try to check their health conditions and also explain how to take medications. Because the area around the dormitory is relatively well-lit and safe, you can come back to the dormitory from the station safely even during late hours.

## DORMITORY'S SAFETY POINTS



The open structure allows you to live a comfortable dormitory life.



Vacuum cleaners, clothes irons, and bicycles are available to borrow at no charge, so there's no need to purchase these items.



The hotel-like lobby facilitates communication with other students and the dormitory manager.



The double security system ensures your safety. A laundromat exclusively for women is also available.



# NON-DEGREE STUDY ABROAD PROGRAM

1 semester or 2 semesters program

Short term programs (2 weeks - 3 months)

LONG TERM

SHORT TERM

## International Japanese Studies Program (Student Exchange Program)

One semester or two semesters program for students under the Student Exchange Program Agreement.

<b>Eligibility</b>	Students at our partner universities
<b>Tuition</b>	Free (under the Student Exchange Program Agreement)
<b>Accommodation</b>	JPY 25,000/month (Single room)
<b>Scholarship</b>	JPY 25,000/month *The number of students granted the scholarship varies by university.

	English Track (MEP-E)	Japanese Track (MEP-J)
<b>Faculty</b>	Faculty of Foreign Studies	See the application guidelines.
<b>Japanese proficiency</b>	No proficiency required	JLPT N2 or higher *A student who expects to pass JLPT N2 is also eligible to apply.
<b>English proficiency</b>	Must be capable of understanding English taught classes Language Requirement: TOEFL iBT 68 or IELTS 5.5 or TOEIC 785 (400 Listening + 385 Reading) *Certificates of English proficiency must be submitted, when applying from a university outside English-speaking countries and European countries.	No proficiency required
<b>Semester</b>	Fall Semester: Late August—Late January / Spring Semester: Late March—Early August	
<b>Duration</b>	1 semester or 2 semesters	

Course	Language Used	Example of Courses Offered	Compulsory / Elective	
			MEP-E	MEP-J
Japanese Language	Japanese	Level: Elementary, Intermediate, Advanced *You will be assigned to your level according to the result of placement test.	●	●
International Japanese studies	English	<b>Fall Semester</b> <ul style="list-style-type: none"> <li>Introduction to International Japanese Studies</li> <li>History of Japan</li> <li>Visual Arts of Japan</li> <li>Social Issues in Japan</li> <li>Explore the culture and history of Central Japan area</li> <li>Japanese Literature</li> <li>Fieldwork for International Japanese Studies I</li> </ul> <b>Spring Semester</b> <ul style="list-style-type: none"> <li>Introduction to Modern and Contemporary History of Japan</li> <li>Japanese Philosophy</li> <li>Japanese Culture</li> <li>International Politics of Japan</li> <li>Fieldwork for International Japanese Studies II</li> </ul>	●	△
Academic Classes	Japanese assisted in English	<ul style="list-style-type: none"> <li>Japanese Tourism</li> <li>Japanese Modern Culture</li> <li>Japanese Literature Studies</li> </ul> <ul style="list-style-type: none"> <li>Japanese Politics</li> <li>Issues in South Asia</li> <li>Issues in ASEAN</li> </ul> *The subjects available for selection vary from year to year.	○	○
	Japanese	Exchange students with JLPT N2 or higher are eligible to take specialized subjects taught in Japanese in their faculty. *Some subjects may not be open to exchange students.	○	○

●: Compulsory ○: Elective △: Open to auditing students (No credits granted)

## Meijo Japan Study Tour

This is a 2 weeks - 3 weeks program offering lectures on the industry, history and culture of Japan.

<b>Eligibility</b>	Students at our current and future partner universities
<b>Duration</b>	Summer: Late June—Early July Winter: Early January—Middle January (2 weeks - 3 weeks)
<b>Program Fee</b>	JPY 180,000~
<b>Accommodation</b>	Hotel / Dormitory / Homestay
<b>Japanese proficiency</b>	No proficiency required. Programs are taught completely in English.



International Japanese Studies Class



Field Trip (Kyoto, etc.)



Japanese Cultural Experience (Manga, Soba making, etc.)

## Laboratory Experience

A program to experience a three-month research activity in laboratories at the University. (Participants may not take classes.)

<b>Eligibility</b>	Students at our current and future partner universities
<b>Duration</b>	Up to 3 months
<b>Program Fee</b>	Free
<b>Accommodation</b>	JPY 50,000/month → JPY 25,000/month (50% exemption for International students) * Available only when there is a vacancy
<b>Japanese proficiency</b>	A consultation is recommended since the level of proficiency required varies by laboratory.

## Facts at a Glance

About Meijo University

Departments **23** Faculties **10** Graduate schools **9**

Number of students **15,277**

Number of alumni who are executives of listed companies **67**

The Times Higher Education World University Rankings 2024 **1501+**

**Nobel Prize winners**  
**3** -AKASAKI Isamu  
-AMANO Hiroshi  
-YOSHINO Akira

**7th consecutive year**  
**University for which high school students want to apply**

## Office of International Affairs

The Office of International Affairs strives to establish partnerships with over 90 universities, colleges, and other educational institutions in Asia, Europe, the United States, Australia, Africa and elsewhere in the world in order to support international student exchanges and interactions in a variety of areas.

We play a role in assisting international students from around the world. We also provide support for their smooth daily and academic lives in Japan.

Opening Hours: Mondays through Fridays 8:50 - 17:20

Office: Tower 75 13th floor, Tempaku Campus



For more details about each program and application procedures, please ask the person in charge at your university.